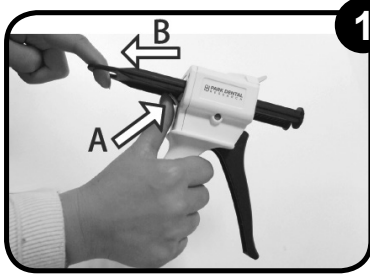


# Park Dental™

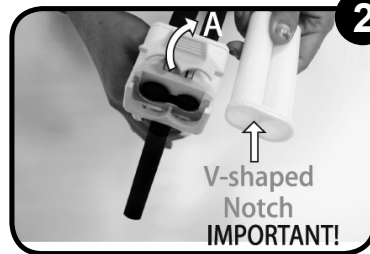
## UNIVERSAL DISPENSING GUN

## INSTRUCTIONS FOR USE

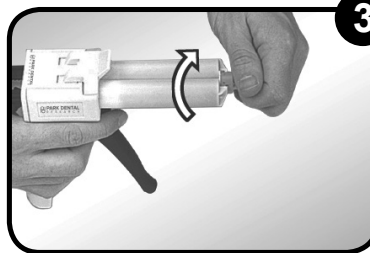
### INSTALL THE CARTRIDGE:



**1** Push the release lever up on the Dispenser (a) and fully retract the plunger (b).



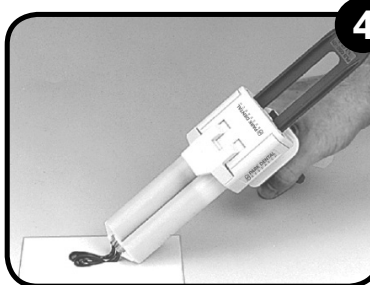
**2** 1. Flip the cartridge lock to the up position (a).  
2. Align the “v-shaped” notches on the cartridge and the gun, then insert the cartridge firmly onto the dispensing gun.  
3. Flip the cartridge lock back to the down position.



**3** Remove the cartridge cap by rotating the cap 90° in a counter-clockwise direction, then peel away.



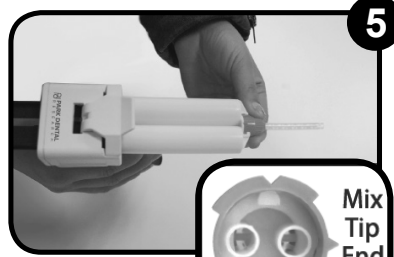
NOTE: DO NOT dispose of the cartridge cap at this point! You may want to store the cartridge for future use if all of the contents are not used. Save the cap for reuse.



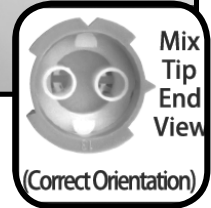
**4** Gently squeeze the dispenser to ensure even flow of both base and catalyst. If this not occur, check for any plugged material and remove with an explorer. Wipe the end of the cartridge clean before installing mix tip.

NOTE: Perform Step 4 every time a cartridge is installed. Whether the cartridge is brand new or has been partially used before, always check for even flow of both base and catalyst before installing the new mix tip.

### INSTALL THE MIX TIP:

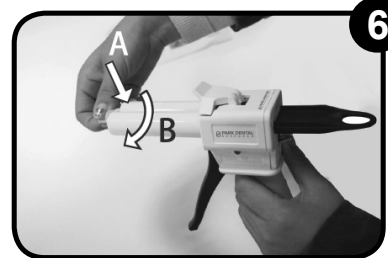


**5** To attach the mix tip: Align the “v-shaped” notch on the mix tip to the “v-shaped” notch located between the cartridge barrels. Push firmly to attach the mix tip to the cartridge.



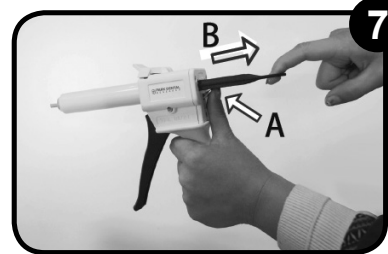
Next, rotate the colored collar of the mix tip 90° in a clockwise direction to its “locked” position. Dispenser is now ready for use.

### WHEN YOU'RE DONE DISPENSING:

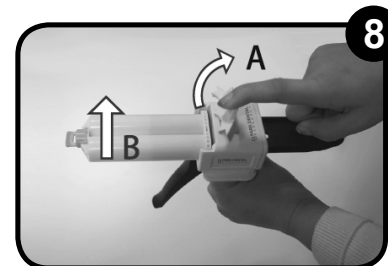


**6** Remove and discard the used mix tip. Replace the cap on the used cartridge and turn the cap clockwise to its locked position.

Alternately, you can leave the used mix tip in place as a storage cap until next use.



**7** To remove the cartridge: Push the dispenser release lever up (a). Fully retract the plunger (b).



**8** Next, place the cartridge lock in the up position (a), and lift the cartridge out of the dispenser (b).